

Welcome to the ScandiOne Time and Day.

Sometimes we have an old laptop, that just stand in a closet somewhere, because we actually don't have anything to use it for. It's old, the battery is worn out, and it is just too slow to be of any use.

So, why not use it as a clock?

When my father got old, he started having trouble remembering which day it was. He wanted us to find a watch that would state with big letters the full name of the month and the day.

This was not an easy task. Remember, we live in Denmark, and the names of days and months should be in Danish!

All I could find was LCD clocks, that would mention the days by the short term "Man" (Monday), "Tir" (Tuesday), "Ons" (Wednesday), etc., and with characters maximum ten millimetres high.

That was just not good enough.

So I thought: Why not just make an application for a portable PC? I can make one of those show anything I want! One single line, saying the whole thing. And with letters in a size it's possible to read from the other side of the room!

The only thing is: This line will take up the lower first inch of the screen. What do I do with the rest? Well, a little folder containing pictures of the grandchildren could be shown as a slideshow there! Great idea!

And this is the result: A happy grandfather, and the application "ScandiOne Time and Day" for you all to download and use!

Please read this manual carefully.

If you encounter any problems, please see the FAQ at our website.

If this does not help you, please feel free the write your question to us at: support@scandione.com

We will try to help you as soon as possible.

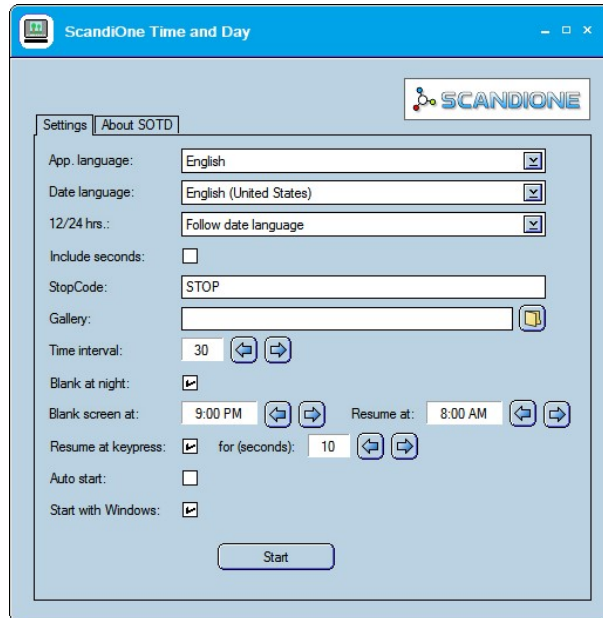
We hope you will enjoy using ScandiOne Time and Day.

Sincerely/Best regards

ScandiOne

Getting started

When you start the application for the first time, you will see something like this:



This is the default settings. The names of the fields are quite self-explaining, but we will run through them anyway:

App. Language is the language in the app. You can choose between English and Danish..

Date Language: This should pretty much contain all the date formats in all the different countries your computer know about (and that's probably a *lot!*). It will give you the day and month names in your specific language, and the presentation of the time accordingly whether it's 12 hours or 24 hours.

12/24 hrs.: You can leave this, if you are satisfied with the local 12 hrs./24 hrs. system in your country, but if you somehow prefer the other notation, you can force it through here.

Include seconds.: This is if you like the clock-part of the displayed line to have seconds in it. Some might find it disturbing that the display changes every second, while others might want the time to be shown exact.

StopCode: When the app is running, it is not possible to see anything else on the screen. To stop the app, you'll have to type the stopcode on the keyboard. You can use any word you like, and it is not case-sensitive.

Gallery is the folder where you keep the pictures for the slideshow. All normal formats can be used ("BMP", "PNG", "JPEG", etc.). If this field is empty or invalid (like a folder which does not exist) the slideshow is just off, and will show a black screen. ScandiOne Time and Day takes a maximum of 100 pictures. If there is more in the gallery, these will be ignored. If you want just one steady picture to be shown, leave this picture as the only one in the gallery-folder.

Time interval is the time for each picture to be shown. It can be set from 5 up to 600 seconds.

Blank at night: If the PC is in the bedroom, it can be disturbing with too much light. Setting this option will make the screen go completely black in the period set in the following two fields:

Blank screen at: The time at which the screen should go black.

Resume at: The time where the screen lights up at continue showing the time and slideshow.

Resume at keypress: When this option is set, pressing any key on the keyboard will make the screen light up if it is blanked.

for (seconds): The number of seconds for the screen to light up when a key is pressed. Can be set from 1 up to 300 seconds.

Auto start: If the PC has been shut down and restarted, this option will make the application start showing the time and slideshow when it is started. **Please note, that this option DOES NOT make the whole app start when the PC is turned on!**

Start with windows: This will make the app start up automatic when the computer is turned on. Combine this with the **Auto Start** option to make the app start the slideshow immediately after turning the PC on.

Avoiding screen blanking

Most PC's has a default setting, where the screen goes blank when the PC have not been used for at couple of minutes. This will of course disturb the whole purpose of at PC working as a clock.

On top of that, most PC's automatically goes into sleep- or hibernate-mode when idle for at longer time. These settings should be altered, and that is normally done in the settings. Look after 'Power and hibernation', 'Battery' or similar. It can be different from PC to PC, depending on the operating system. Anyway, Google can tell you.

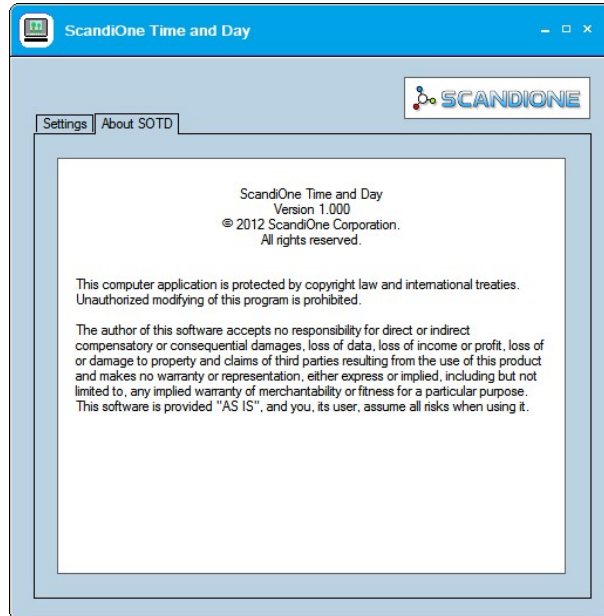


Well here you are. Now you should be in great shape!

Please note: If you have forgotten the stopcode, you can always use 'ScandiOne' (this is case sensitive, please observe the big 'S*' and big 'O'). If you try to stop the application with the stopcode, and nothing happens, the app has possibly lost focus. It could be because somebody has made a click somewhere. Use the mouse (or touchpad) to move the pointer to another place (estimated, since you can not see it), and click. This should focus the app again, and the stopcode can be entered with success.

About SOTD

This means: "About ScandiOne Time and Day", but this sentence was too long to put in the tab.



It is the normal promotion of our company, telling you not to change our product, and a disclaimer saying, that if you loose any money or anything else because of your use of our product it's not our fault.

Well this is about it!

Thank you for reading so far, and we hope you will enjoy using this product, and that you will have a great experience.

If you have any questions, please see the FAQ at our website, alternatively send us an email to support@scandione.com about your problem.

Comments and proposals are welcome too. Yes, let us know what you mean.

Sincerely / best regards

ScandiOne
Denmark